

## Evacuation Routes Building C - 5th Floor

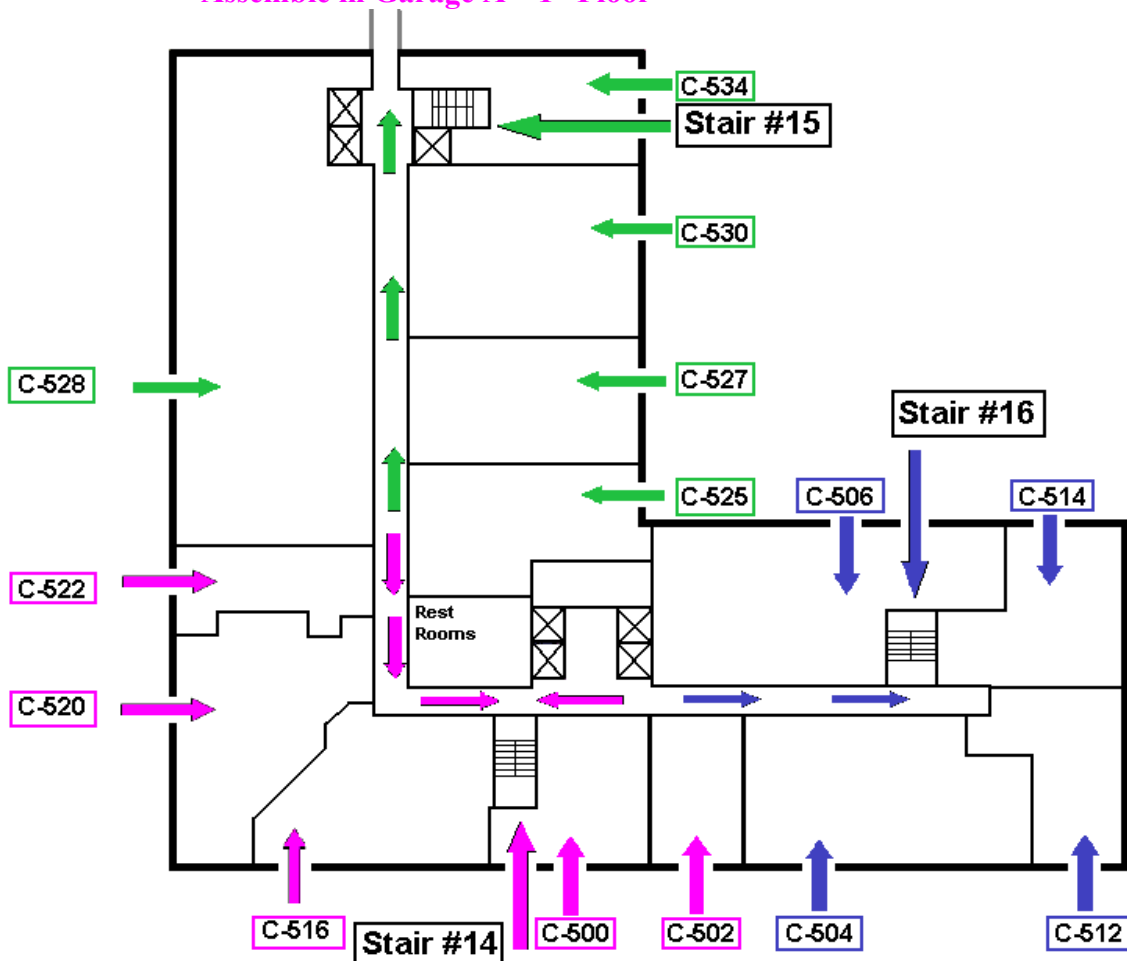
**SUITES:** C-504, C-506, C-512 & C-514

Evacuation routes are determined by the location of the emergency.

If your primary evacuation route is not accessible evacuate via the secondary route.

**Primary:** Use Stairwell #16  
Exit Building on 1<sup>st</sup> Floor  
Assemble in Garage B – 1<sup>st</sup> Floor

**Secondary:** Use Stairwell #14  
Exit Building on 1<sup>st</sup> Floor  
Assemble in Garage A – 1<sup>st</sup> Floor



**Building C  
Fifth Floor**